



Sotheby's | Canada
INTERNATIONAL REALTY

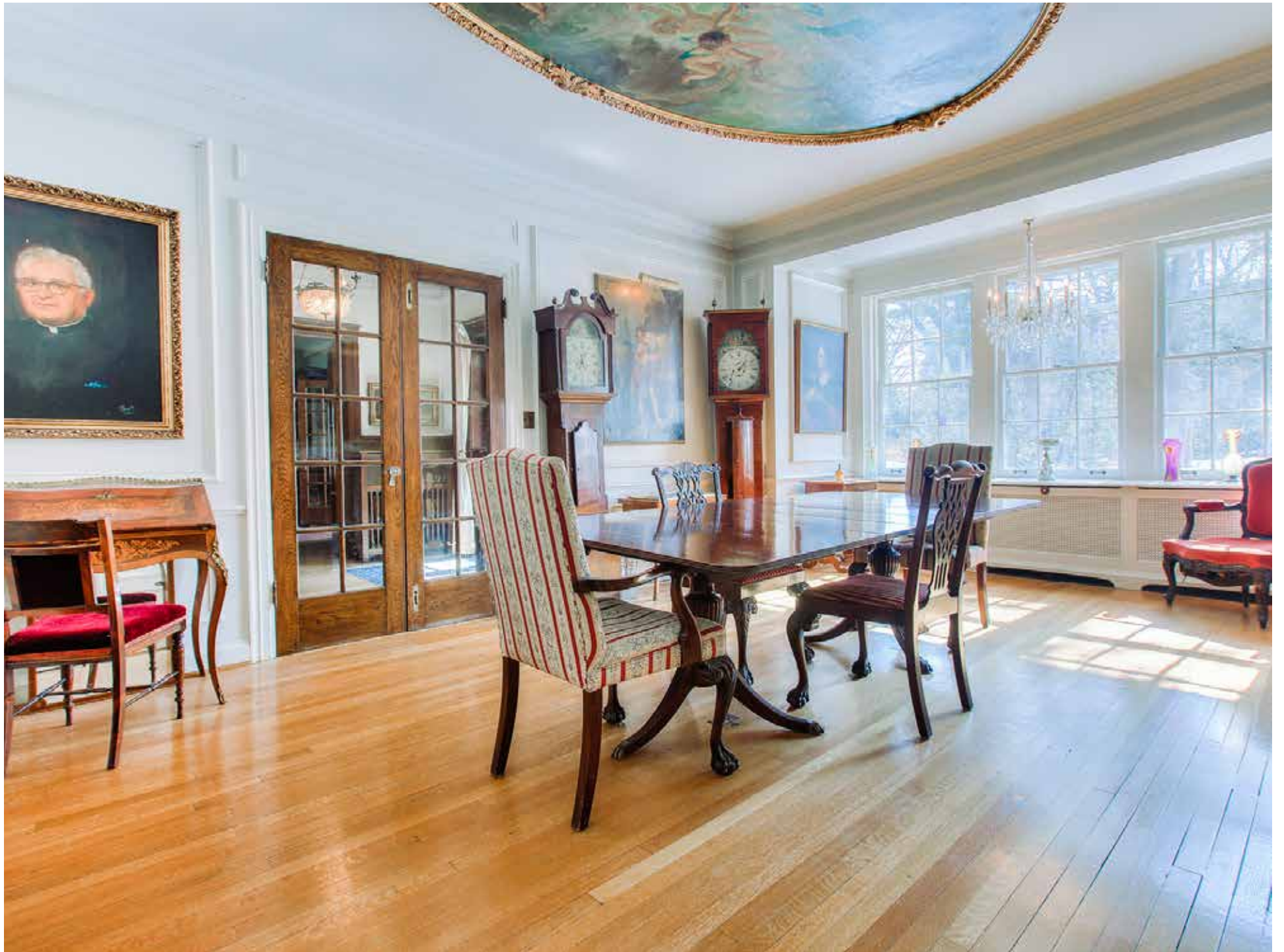
For those who seek an exceptional life

LAWRENCE PARK | 228 STIBBARD AVE & 307 BLYTHWOOD ROAD, TORONTO, ON











LAWRENCE PARK

228 Stibbard Ave & 307 Blythwood Road, Toronto, ON

7 Bedrooms 5 Bathrooms \$14,000 (2020) Taxes

105 x 250 LOT SIZE

For those who eschew the ordinary. Originally crafted by a privileged English family with noble elements back in 1905, this is a rare opportunity to cherish and restore this enchanting home and property. Set on an impeccable 105 x 250 private lot accessed behind its iron gates and lengthy private road, well set back from the street and nestled into the hillside, your secret garden awaits. With only three owners in its 116-year history, the next 40 years of memories await to be created here in this one of a kind setting. Just steps to Sherwood Park and ravine, a delight for nature enthusiasts. Close to Toronto's best public and private schools, Summerhill Market is just around the corner. Simply Magical.



NIGEL DENHAM

Sales Representative, Senior Vice President - Sales

c: 416.300.1245

o: 416.960.9995

ndenham@sothebysrealty.ca



ROBERT NELSON

Sales Representative

c: 416.844.8413

o: 416.960.9995

rnelson@sothebysrealty.ca



PENNY BROWN

Broker, Senior Vice President - Sales

c: 416.725.4256

o: 416.960.9995

pbrown@sothebysrealty.ca

