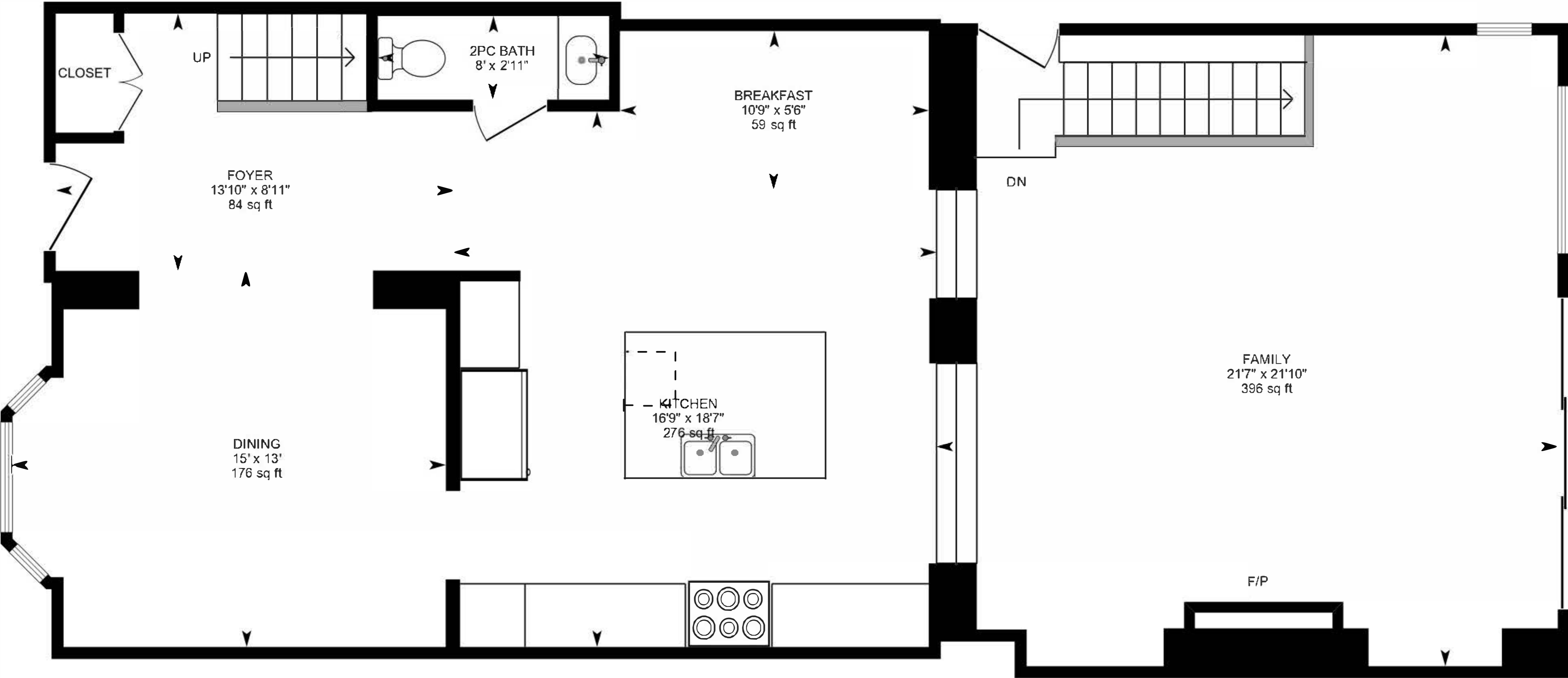
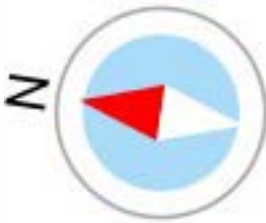


# 51 Hewitt Ave, Toronto, ON

Main Floor Finished Area 1203.00 sq ft



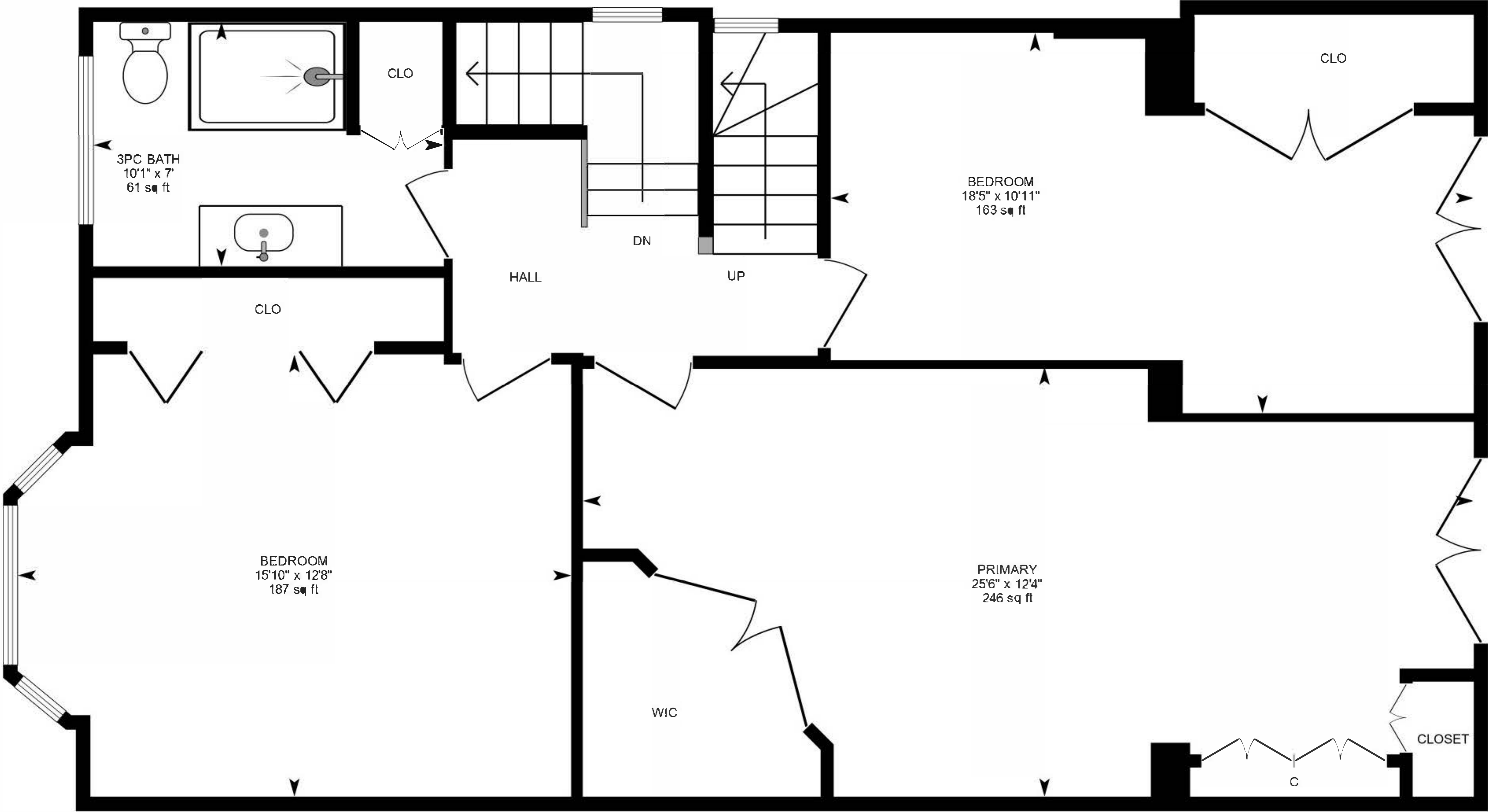
PREPARED: 2024/08/07



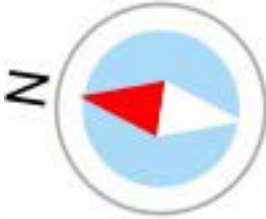
White regions are excluded from total floor area in iGUIDE floor plans. All room dimensions and floor areas must be considered approximate and are subject to independent verification.

# 51 Hewitt Ave, Toronto, ON

2nd Floor Finished Area 943.79 sq ft



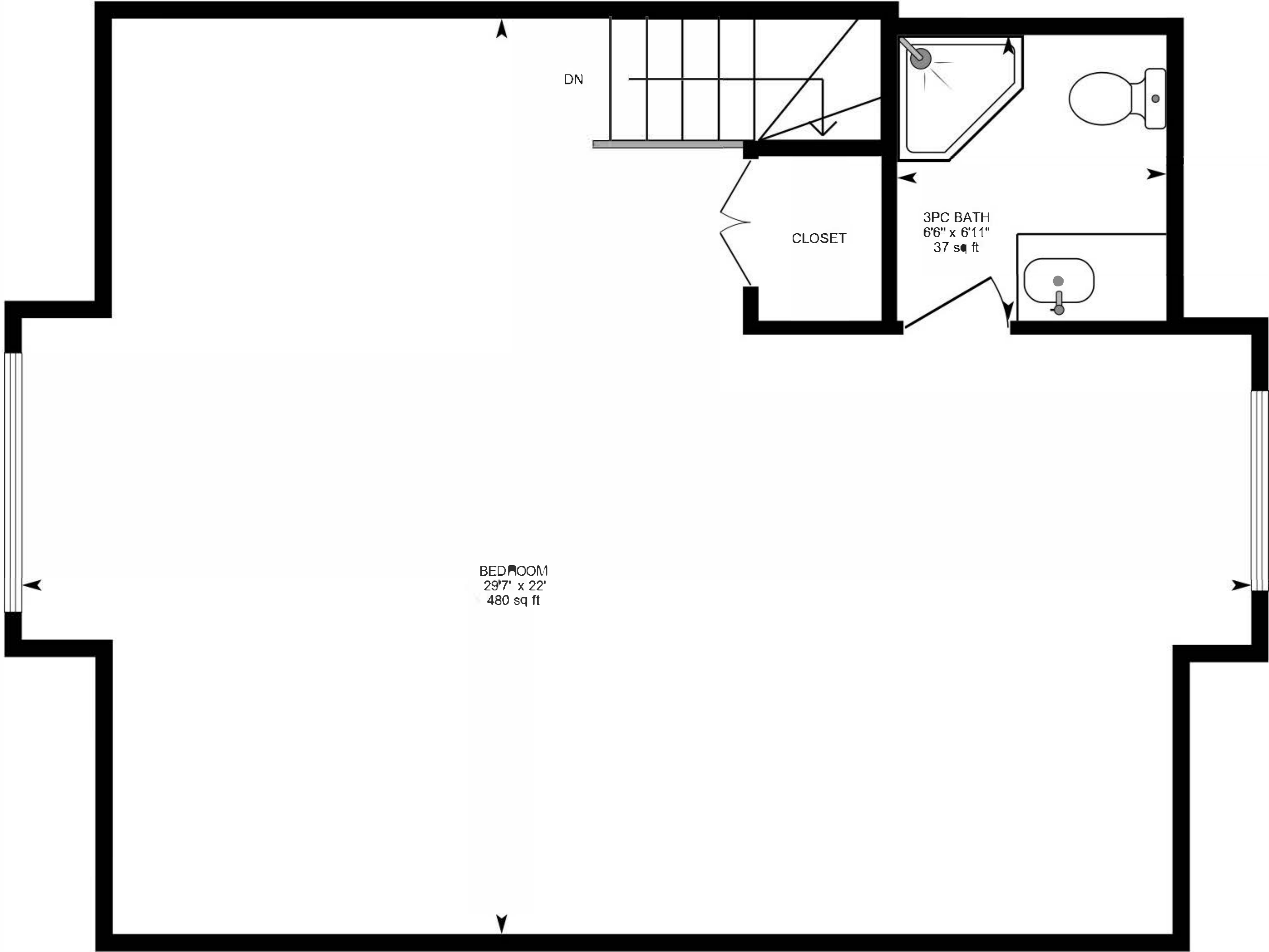
PREPARED: 2024/08/07



White regions are excluded from total floor area in iGUIDE floor plans. All room dimensions and floor areas must be considered approximate and are subject to independent verification.

# 51 Hewitt Ave, Toronto, ON

3rd Floor Finished Area 587.01 sq ft  
Unfinished Area 47.27 sq ft



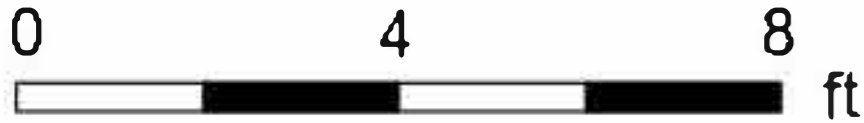
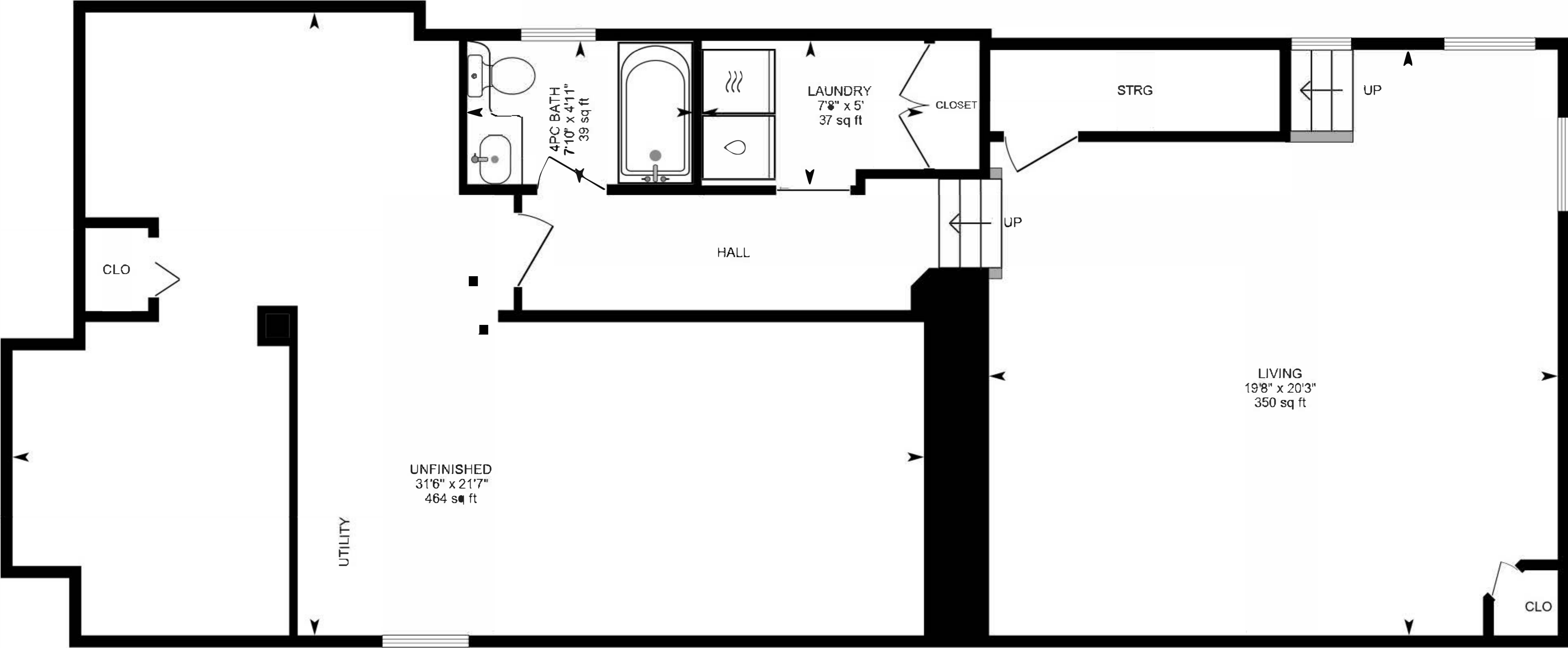
PREPARED: 2024/08/07



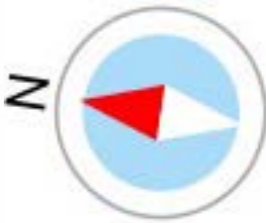
White regions are excluded from total floor area in iGUIDE floor plans. All room dimensions and floor areas must be considered approximate and are subject to independent verification.

# 51 Hewitt Ave, Toronto, ON

Basement (Below Grade) Finished Area 627.08 sq ft  
Unfinished Area 508.62 sq ft



PREPARED: 2024/08/07



White regions are excluded from total floor area in iGUIDE floor plans. All room dimensions and floor areas must be considered approximate and are subject to independent verification.